



WORLDWIDE ELECTRIC MOTOR DATA SHEET

PEWWE250-18-449T



HORSEPOWER	250		
RPM / POLES	1800 / 4		
VOLTAGE / PHASE	460 V / 3		
FRAME	449T		
ENCLOSURE / DEGREE OF PROTECTION	TEFC / IP55		
FREQUENCY	60 HZ		
FULL LOAD SPEED	1790 RPM		
SERVICE FACTOR	1.15		
INSULATION CLASS	F		
FULL LOAD AMPS	280 A		
LOCKED ROTOR AMPS (STARTING)	1825 A		
NO LOAD CURRENT	91.5 A		
NEMA CODE LETTER	G		
EFFICIENCY / POWER FACTOR	<u>LOAD</u>	<u>EFF.</u>	<u>P.F.</u>
	100 %	96.2%	0.87
	75 %	96.3%	0.84
	50 %	95.8%	0.75
DUTY CYCLE	S1 / Continuous		
TORQUE	<u>FULL LOAD</u>	<u>LRT</u>	<u>BDT</u>
	733 lb.ft.	200%	260%
SLIP	0.56 %		
NEMA DESIGN	B		
MOMENT OF INERTIA	82.7 lb.ft.²		
MAX. TIME LOCKED ROTOR (Hot)	17 Seconds		
SOUND PRESSURE LEVEL	83 dB (A)		
MAX. AMBIENT TEMPERATURE	40° C		
MAX. ELEVATION	3300 Ft.		
TEMPERATURE RISE (At Full Load)	80° C		
DE BEARING	NU320 C3		
ODE BEARING	6320 C3		
REGREASING INT. - DE BEARING	1,300 Hours		
REGREASING INT. - ODE BEARING	1,800 Hours		
GREASE TYPE	LGHP2 (SKF)		
MOUNTING	F1		
ROTATION	Bi-Directional		
SHAFT MATERIAL	4140 Carbon Steel		
INVERTER RATING	10:1 CT / 20:1 VT PWM Type		
CONNECTION DIAGRAM	460 V - 6 Lead Δ		
AREA CLASSIFICATION	Class I, Division 2, Groups A, B, C, D		
APPROXIMATE WEIGHT	2649 lbs.		



CC006A

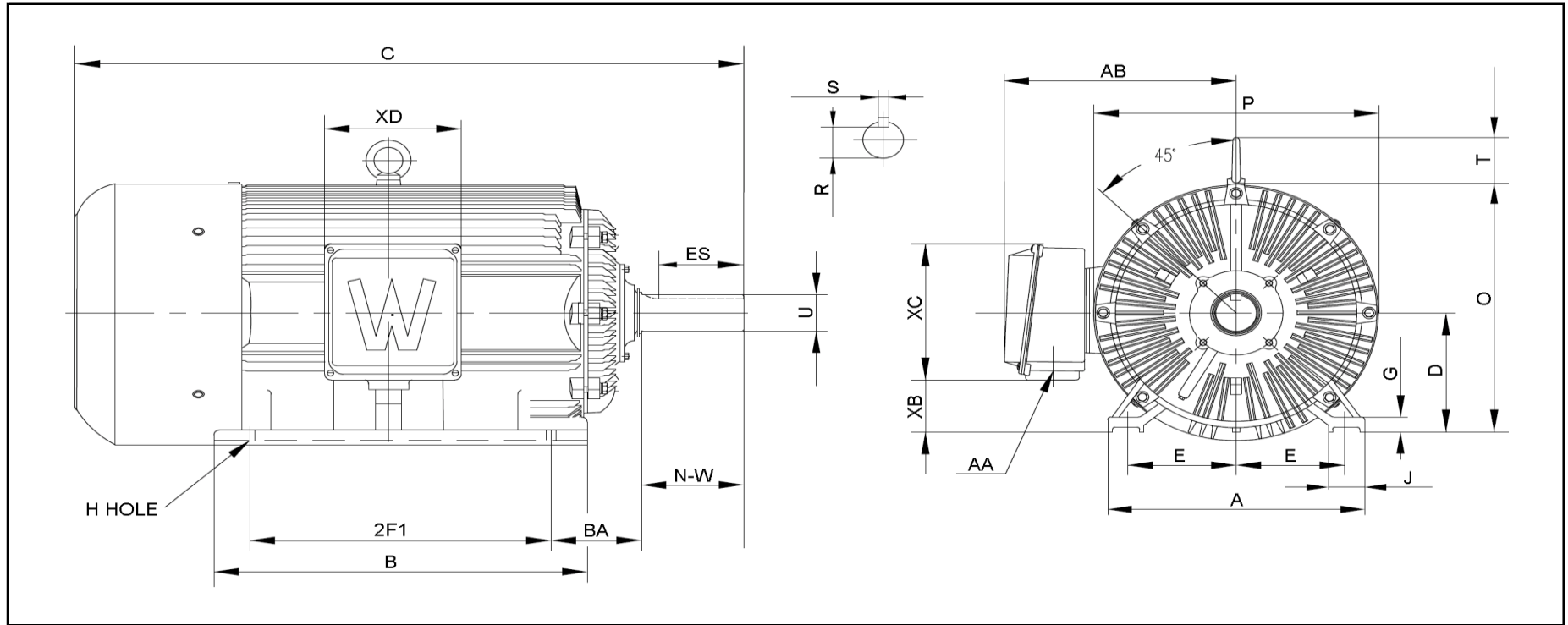


REVISED - JULY 30, 2018



WORLDWIDE ELECTRIC MOTOR DRAWING

PEWWE-449T



DIMENSIONS - INCHES

MOUNTING					A	B	C	D	G	J	P	O	T	AB
E	2F1	2F2	H	BA										
9	25	---	0.81	7.5	22	31	58	11	1.575	3.35	24	23	4.25	19.5

KEY		KEYSET	SHAFT		TERMINAL BOX				
S	ES	R	N-W	U	AA	XB	XC	XD	XE
0.875	7.01	2.88	8.5	3.375	2 x 3"	4.7	12	11.5	---

PERFORMANCE CURVES

WorldWide Electric Corporation

1 (800) 808-2131

Worldwideelectric.net



Premium Efficiency Motor:

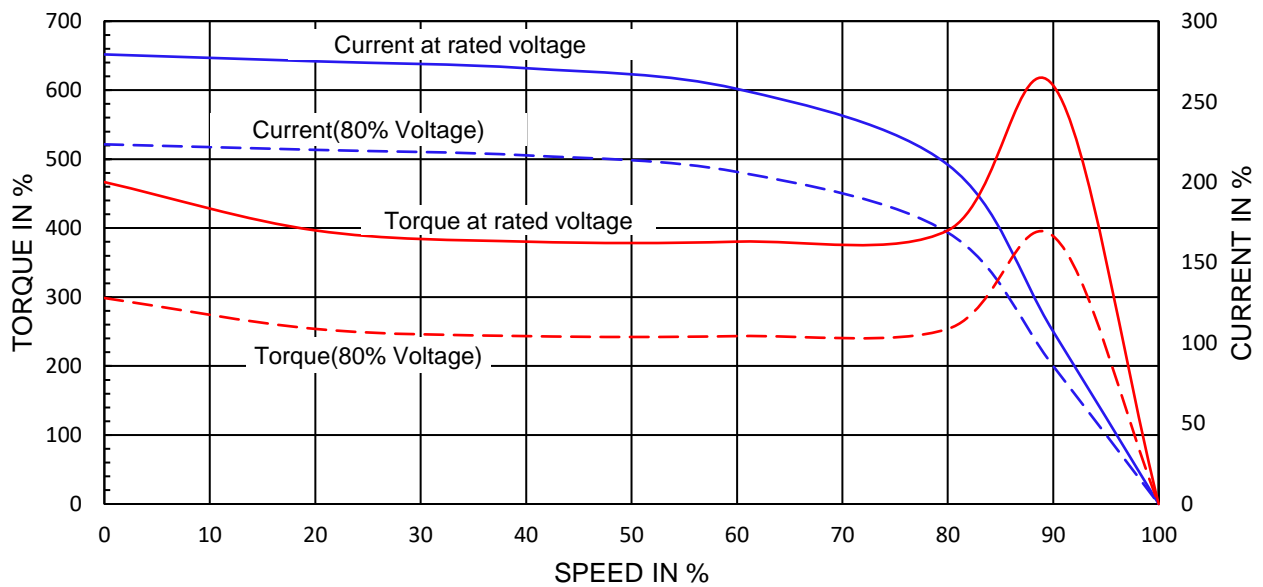
PEWWE250-18-449T

Document Generated: 25-Jun-2020
Document ID:

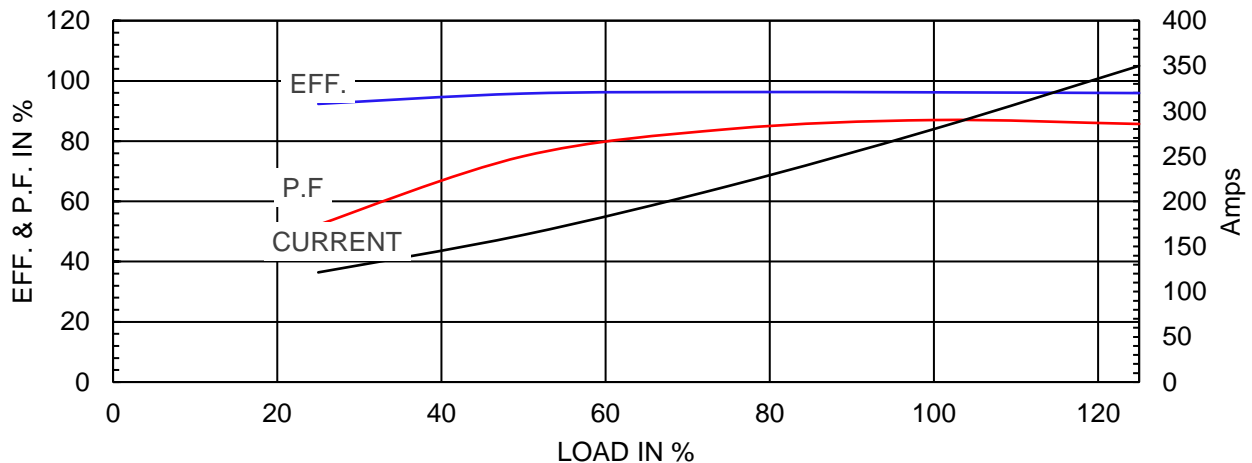
Customer:

Motor Type	PEWWE		FL Speed	1790	
Output Rating (HP)	250		LRT (%FLT)	200	460 volt FLA 280
Full Load Torque	733 lb.ft		BDT (%FLT)	260	230 volt FLA A
Rotor Wk ²	82.7 lb-ft ²				

SPEED VS TORQUE & CURRENT CURVE



OUTPUT VS EFF., P.F. & CURRENT CURVE



NAMEPLATE / WIRING

WorldWide Electric Corporation

1 (800) 808-2131

Worldwideelectric.net






Premium Efficiency Motor:

PEWWE250-18-449T

Document Generated: 14-Oct-2019
Document ID:

Customer:

SAMPLE NAMEPLATE DATA

 		PREMIUM EFFICIENCY 3-PHASE INDUCTION MOTOR			259277 	CC006A ISO9001	
Model	PEWWE250-18-449T	Ser No.	ZP				
HP	250	S.F.	1.15	Type		Encl	TEFC IP55
Frame	449T	P.F.	0.87	Ins Cl	F	Rating	40°C Amb Cont
Voltage	460V	Hz	60 Hz	Design	B	DE Brng	NU320 C3
Amps	280A	RPM	1790	Code	G	ODE Brng	6320 C3
Nom. Eff.	FL 96.2 %	3/4 96.3 %	460	V		Date	
Class I Division 2 Groups A B C D				Amb.40°C		T3(200°C)	
10:1 CT 20:1 VT PWM VFD 1.0SF							
WorldWide Electric Corporation							

Connection

6	4	5
1	2	3
L1	L2	L3

